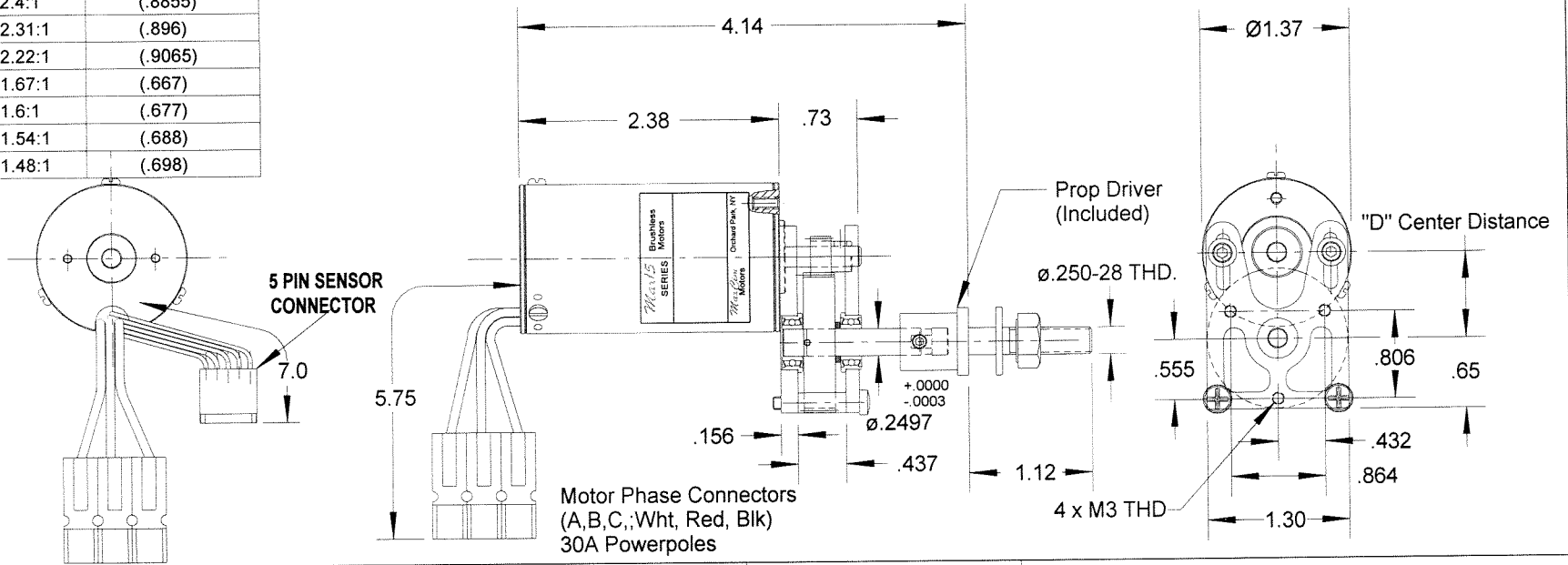


Pinion Gear	Gear Ratio	"D" Center Distance
15T/60T	4:1	(.7815)
16T/60T	3.75:1	(.792)
17T/60T	3.53:1	(.8021)
18T/60T	3.33:1	(.8125)
20T/60T	3:1	(.8335)
22T/60T	2.73:1	(.854)
24T/60T	2.5:1	(.875)
25T/60T	2.4:1	(.8855)
26T/60T	2.31:1	(.896)
27T/60T	2.22:1	(.9065)
24T/40T	1.67:1	(.667)
25T/40T	1.6:1	(.677)
26T/40T	1.54:1	(.688)
27T/40T	1.48:1	(.698)

Also Available with 40 or 50 tooth Spur Gear
Ratio = #Spur Teeth/#Pinion Teeth

REVISIONS				
ZONE	REV	DESCRIPTION	DATE	APPROVED
	A	Added 22T gear, ratio 3.73	8/31/96	TRC
	B	Added 18T, 25T, 26T, 27T gears and ratios	12/15/96	TRC
	C	Added 40T gear ratios and dimensions	11/29/97	TRC
	D	Added MaxGR-1/4 Notation	2/18/2000	TRC



		UNLESS OTHERWISE SPECIFIED DIMENSIONS IN INCHES	INTERPRET DRAWING PER ANSI Y14.5-1982	MODEL NO. <i>Max15 Series</i>	<i>MaxCim Motors</i> ORCHARD PARK, NY 14127	
		.xx ± .01 .xxx ± .005	MATERIAL	PREPARED T. CIMATO 5/13/96	MaxN32-13() MOTOR with MaxGR-1/4 Gearbox	
		ANGULAR ± 1°		CHECKED		
		FILLETS .015 RAD		ENGR T. CIMATO 5/13/96		
		EDGES .010 RAD OR CHAM		MFG		
		SURFACE ROUGHNESS PER ANSI Y14.36 & B46.1 125 ✓		QUAL	SIZE B	CAGE NO.
NEXT ASSEMBLY	USED ON	PART TO BE FREE OF BURRS AND SHARP EDGES			Max15GR-1/4	
				SCALE 1:1	REV D	
				SHEET 1 OF 1		