

# MEGAMax3.7

Series

## Brushless DC Motors & Digital Speed Controls

\*\*\*\*\* New Direct Drive motors for your LARGE scale and sport airplanes. \*\*\*\*\*  
Brushless DC motors and digital electronic speed controls offer a **no maintenance (no brushes)**, high efficiency, light weight and compact power source. With 36 cells and 2200 available Watts, you can easily fly ¼ scale models from 10 to 30 lb. with props to 32" diameter.

### MOTOR TECHNICAL DATA - MODEL NO:

Motor Parameters (Units)	MEGAMax3.7 - 2Y	MEGAMax3.7 - 3Y	MEGAMax3.7 - 4Y	MEGAMax3.7 - 5Y	MEGAMax3.7 - 6Y
Torque Constant (oz.In./Amp)	4.65	6.97	9.29	11.61	13.94
Voltage Constant (rpm/Volt)	265	177	133	106	88
Motor Constant (oz.in./√Watts)	35.6	36.2	36.4	36.3	35.8
Rated Peak Power. * (Watts)	> 2200 *	> 2200 *	> 2200 *	> 2200 *	> 2200 *
Line-Line Resistance (Ohms)	0.025	0.052	0.090	0.140	0.205
Max. Current (Amps)	60	55	50	45	45
Idle current $I_0$ – (7 cells) (Amps)	1.0	0.8	0.6	0.5	0.5
Max. Operating Speed – rpm (VDC)	10,000 (36)	10,000 (45)	10,000 (55)	10,000 (73)	10,000 (73)
Cogging Torque (oz.in.)	< 1.0	< 1.0	< 1.0	< 1.0	< 1.0
Weight with connectors (oz.)	45	45	45	45	45

\* At an ambient temperature of 75°F and with a minimum of 20 cfm forced air flow over the motor housing. (normal flying conditions)  
Depending on number of NiCd cells - varies from approx. 1500 at 25 cells to more than 2200 at 36 cells

### CONTROLLER TECHNICAL DATA

Controller Parameters (Units)	Model <i>Max</i> 135-36
DC Input Voltage (Volts)	16 to 50 (12 to 36 Nicad cells)
Output DC Current * (Amps)	35 Continuous (65 Peak for ~45 Sec)
Equivalent on Resistance (Ohms)	0.012
Weight <u>with</u> connectors (oz.)	3.5

\* At an ambient temperature of 75°F and with a minimum of 10 cfm forced air flow over the controller cover. (normal air flow through the fuselage will suffice)

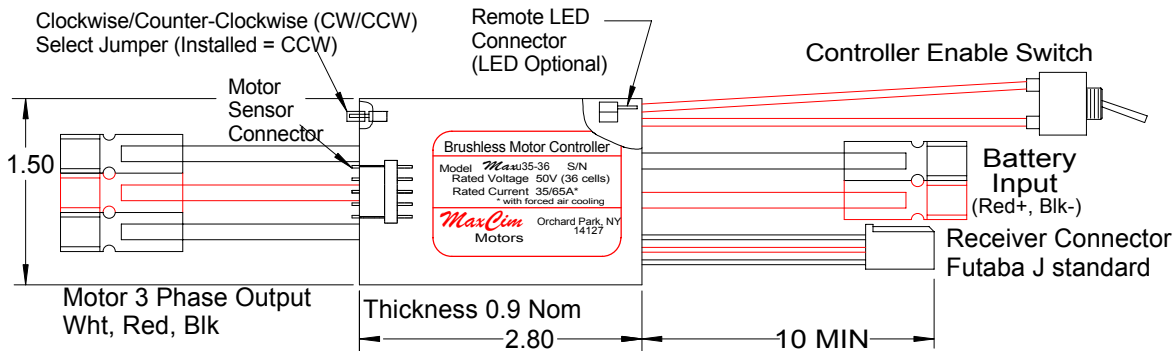
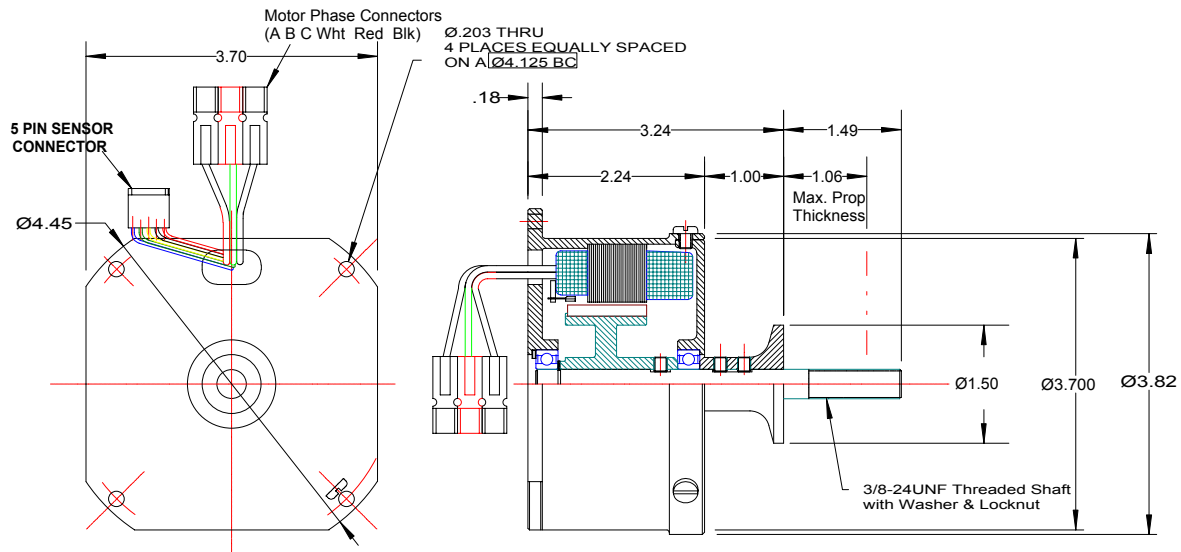
### Controller Features:

- Dual Opto-Coupled receiver input – receiver must be on to energize the controller
- Jumper selectable motor rotation direction, to accommodate direct drive or pusher applications.
- "Auto-Phase Advance" - No motor adjustment required with a change in rotation direction.
- Missing pulse detector, shuts down the motor if the radio signal is lost.
- Automatic setup with built in microprocessor (no pots to adjust).
- Proportional Brake with use of throttle trim.
- Standard Powerpole® battery and motor connectors, and Futaba/JR receiver connector.
- LED displays BIT (built in test) functions for Setup assistance and troubleshooting.
- Optional remote LED with 8" cable for fuselage mounting.
- Cool running Very-High-Rate 10 kHz. PWM – runs cool at part throttle.

# MEGAMax3.7

Series

## Brushless DC Motors & Digital Speed Controls



### ORDERING INFO:

MOTOR MODEL MEGAMax3.7-  Y  = 2, 3, 4, 5 or 6 (turns per coil)

Price - \$639.99

For example: order MEGAMax3.7- 2Y

DIGITAL BRUSHLESS CONTROLLER MODEL: Max35-36Opto - 12 to 36 cells

Price - \$220.00

E-mail or phone for application assistance:

Call Today, **MaxCim Motors, Inc.**  
57 Hawthorne Dr.  
Orchard Park, NY 14127-1958

Tel/Fax: (1) 716-662-5651

E-mail: [maxcim\\_motors@localnet.com](mailto:maxcim_motors@localnet.com)  
<http://www.maxcim.com>